

Galeri
Sasha

Fadhli Ariffin

19 April - 10 May 2025

Malaysia



BINO

Galeri Sasha is pleased to present *Bino*, a solo exhibition by Fadhli Ariffin “Pali” (b.1989, Perak) on view from April 19th to May 10th. In *Bino*, Fadhli Ariffin returns to his roots—both geographically and spiritually—by drawing inspiration from light itself. The word “Bino,” derived from the colloquial Perak dialect, stems from *berbinar-binar*—the glimmer or shimmer of light reflected on water. This phenomenon becomes the conceptual anchor for a new body of work that continues Pali’s signature exploration of repetition, layering, and mark-making.

Bino opens up a new visual terrain: one that is much more fleeting and contemplative. Using a meditative process of washing, layering, and brushing, Pali builds a delicate surface that echoes the ephemeral quality of light as it dances across lakes, rivers, waterfalls, and rain. His tools range from rollers to brushes to cloth, applied in gestures that oscillate between control and spontaneity. What emerges are paintings that hum with movement—neither abstract nor representational, but somewhere in between. Pali’s background in printmaking remains foundational to his approach, and is inspired by the process of collography. The logic of printing—its attention to surface, to layering, to the quiet rigor of repeated gestures—permeates each canvas. Each layer is applied not just as colour, but as residue of time and intention.

As each composition unfolds, repetition becomes both a formal device and a quiet act of devotion. The rhythm of mark-making—layer upon layer—mirrors the persistence of natural cycles, offering a counterpoint to the speed and fragmentation of contemporary life. The works are fleeting in nature and thus, invites close inspection of the colour, texture, and shift. Shadows are gently controlled. Highlights arrive unexpectedly, like light breaking through surface tension.

Galeri Sasha

While *Bino* marks a departure from the darker, more introspective palette of Pali's earlier series *Frekuensi*—developed in isolation during pandemic lockdowns—it continues his deeper inquiry into rhythm, intuition, and the unseen forces that guide creative practice. If *Frekuensi* was a search for internal alignment, *Bino* opens up toward the external world: its textures, its repetitions, its quiet brilliance.

The works in *Bino* are not representations of nature but extensions of it. They carry the marks of a process that is both deliberate and instinctive—one that embraces imperfection, embraces change. Through this, Pali creates a visual language that is deeply personal, yet open to interpretation. His compositions shimmer not only with colour, but with a sense of presence—anchored in the moment, yet endlessly shifting.



Fadhli Ariffin

b. 1989, Perak, Malaysia

Fadhli Ariffin (b. 1989, Taiping, Perak) is a multidisciplinary artist whose practice encompasses painting, drawing, sculpture, and printmaking. A graduate of Universiti Teknologi MARA (UiTM), Fadhli's work is grounded in material exploration and a sustained engagement with gesture, repetition, and process. His use of tools—whether rollers, brushes, or cloth—reflects a tactile and intuitive approach, honed through his background in printmaking.

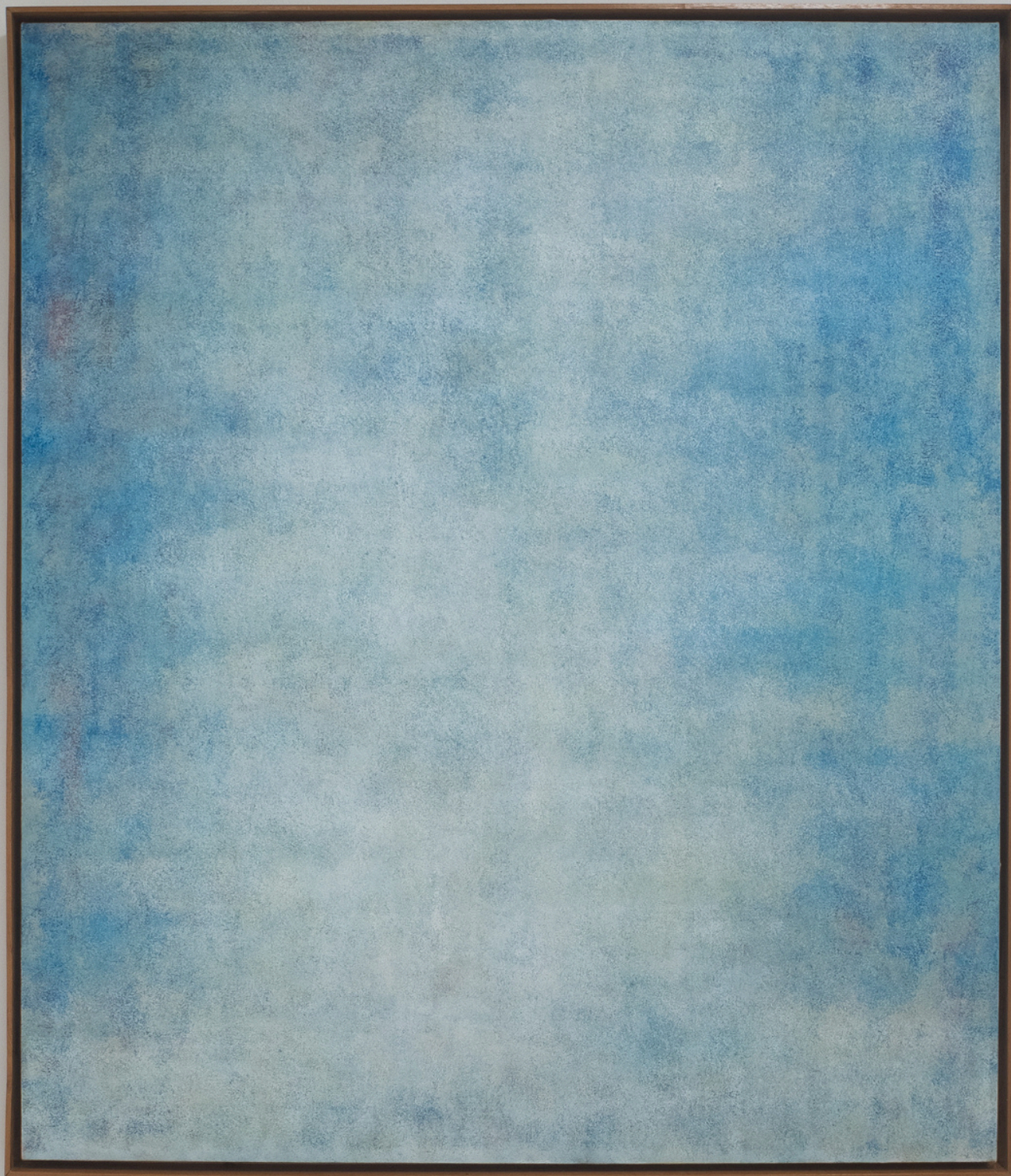
His debut solo exhibition (*P*)residen (2015) was presented through the HOM Art Trans Residency. Since then, he has exhibited in *Peristiwa Di Awangan* at Rissim Contemporary (2021), KL Art Expo (2022), and Art Jakarta (2023). His work is held in private and institutional collections in Malaysia, Singapore, and Indonesia. He is also a founding member of the printmaking collective Chetak 17, alongside Bayu Utomo, Samsudin Wahab, and Faizal Suhif. Through his evolving practice, Fadhli continues to explore what it means to make, to observe, and to reflect—on both the self and the surrounding world.

Galeri
Sasha



Bino I, 2025
Acrylic on canvas
140 x 120 cm

Galeri
Sasha



Bino II, 2025
Acrylic on canvas
140 x 120 cm

Galeri
Sasha



Bino III , 2025
Acrylic on canvas
140 x 120 cm

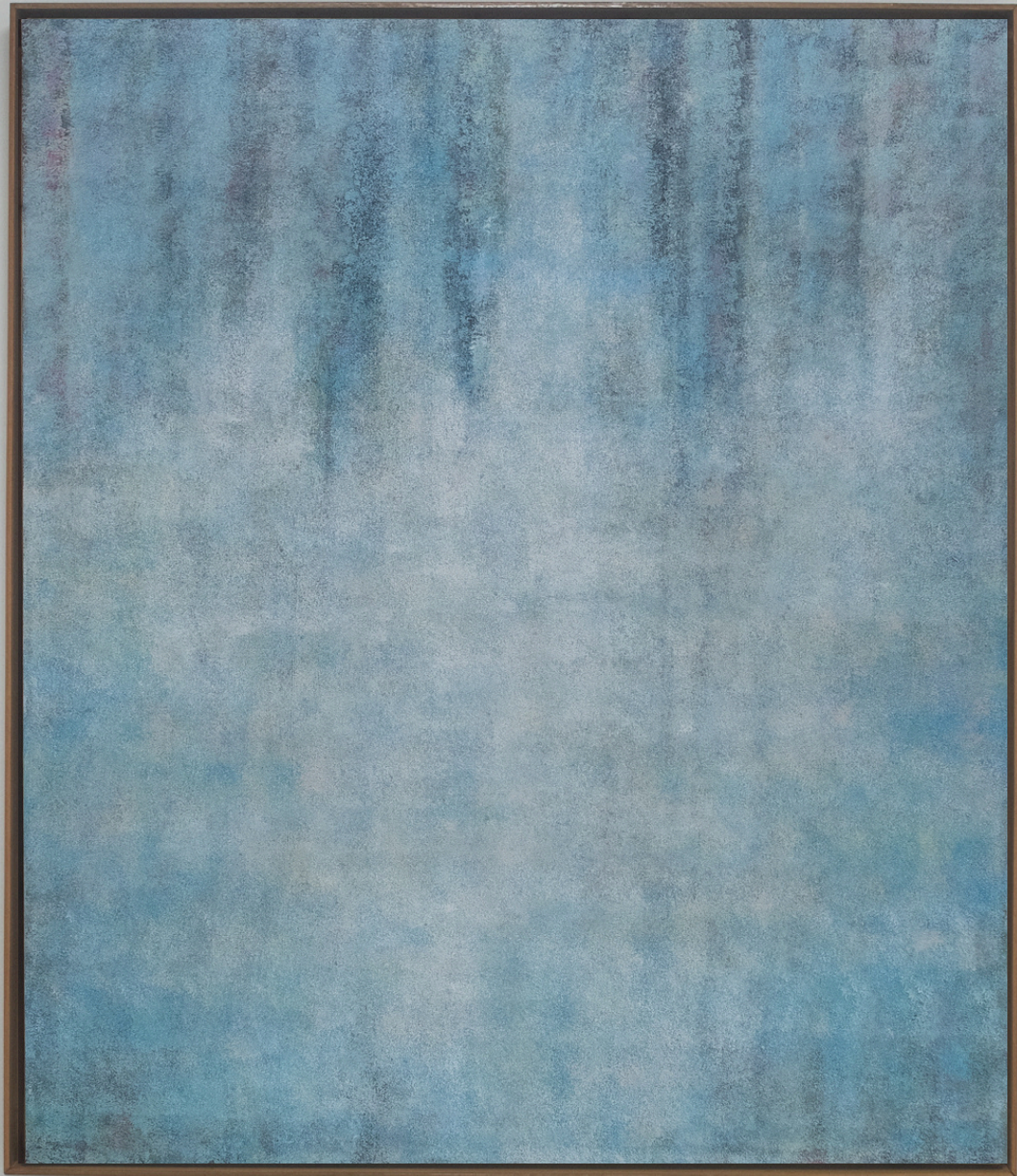


Galeri
Sasha



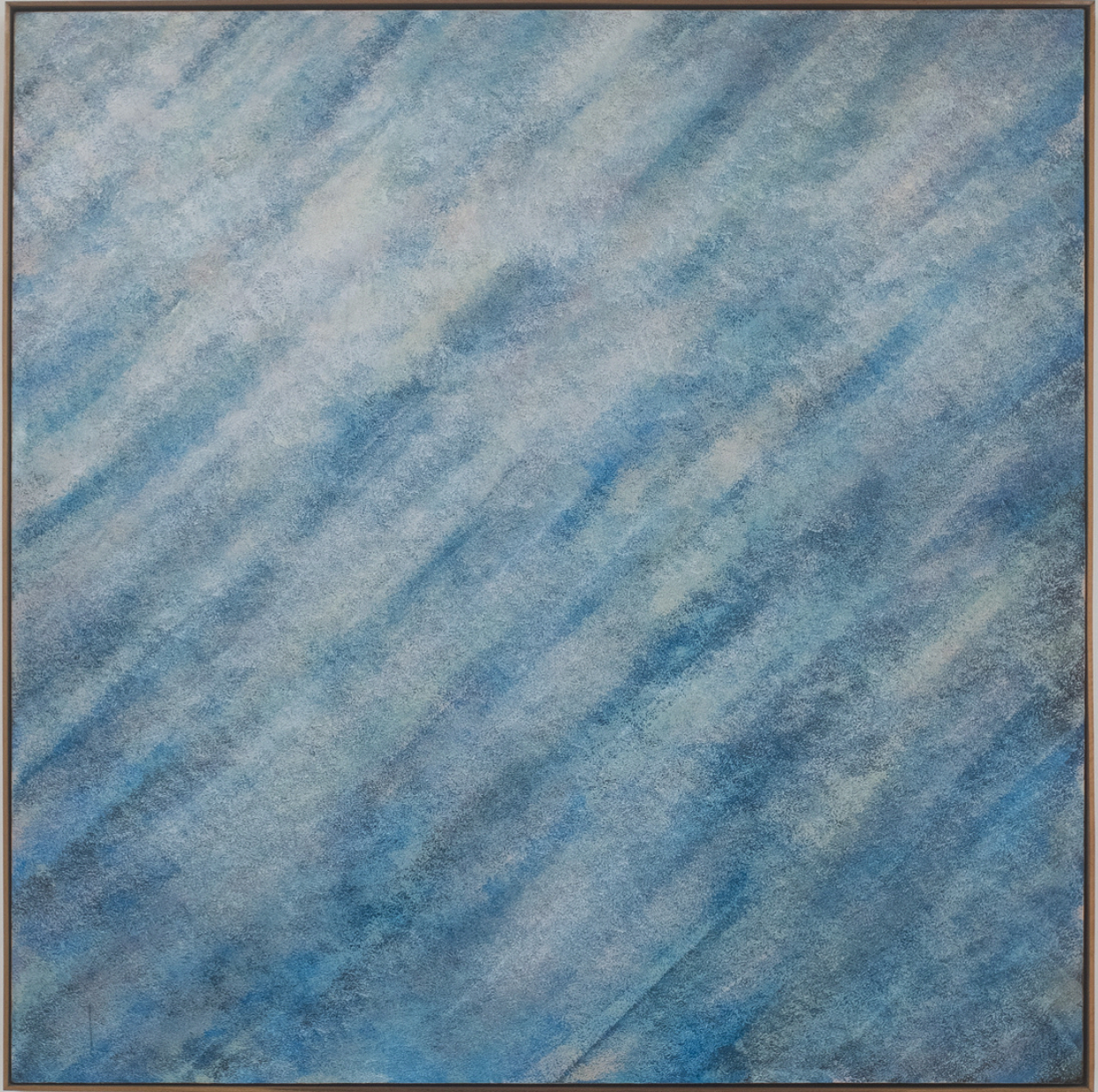
Bino IV , 2025
Acrylic on canvas
140 x 120 cm

Galeri
Sasha



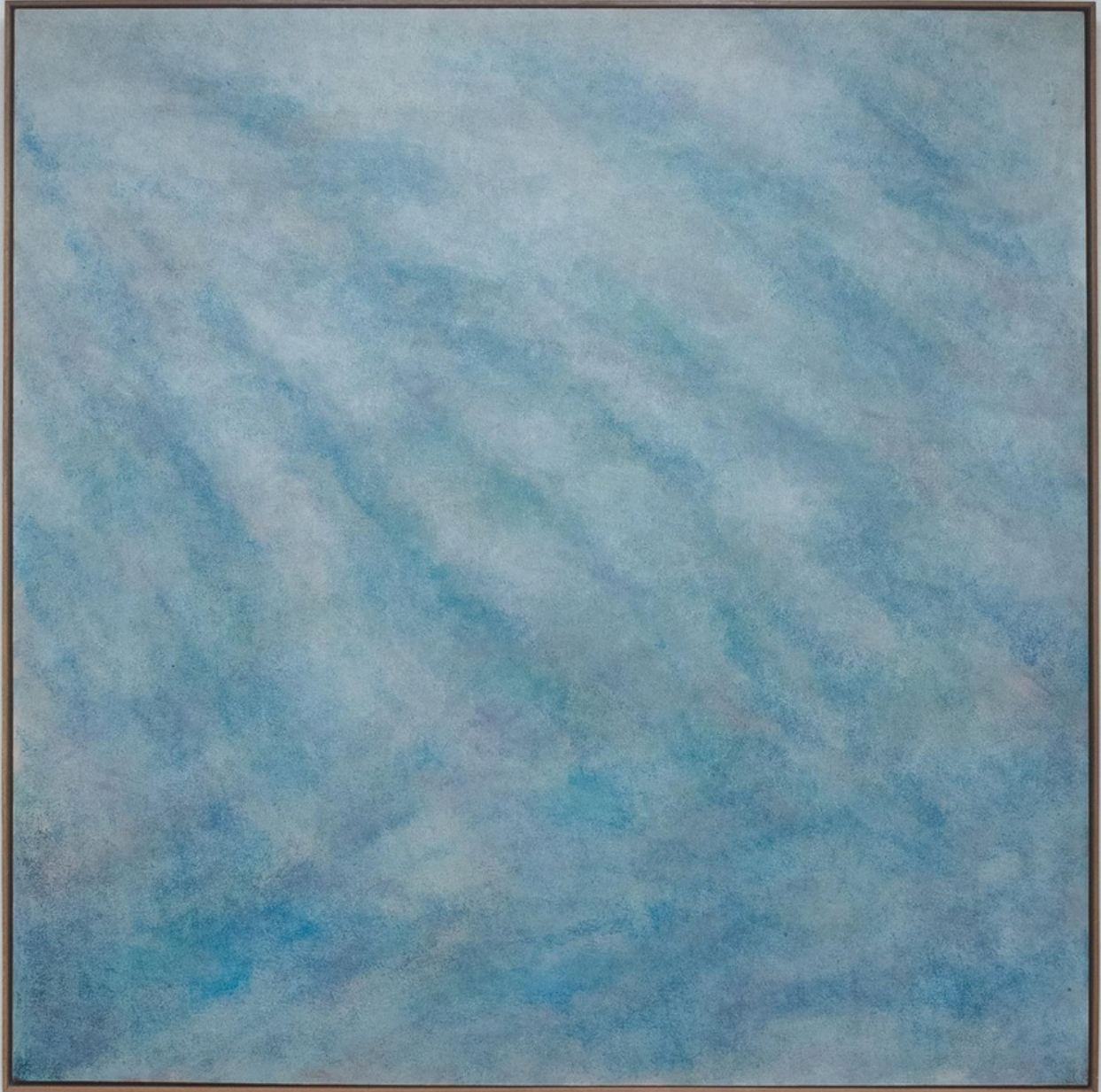
Bino V , 2025
Acrylic on canvas
140 x 120 cm

Galeri
Sasha



Bino VI , 2025
Acrylic on canvas
150 x 150 cm

Galeri
Sasha



Bino VII , 2025
Acrylic on canvas
150 x 150 cm

Galeri
Sasha



Bino VIII , 2025
Acrylic on canvas
150 x 150 cm

Galeri
Sasha



Bino IX , 2025
Acrylic on canvas
150 x 120 cm

Galeri
Sasha



Bino X , 2025
Acrylic on canvas
220 x 180 cm

Galeri
Sasha



Bino XI, 2025
Acrylic on canvas
150 x 150 cm

Galeri Sasha

 galerisasha.com

 info@galerisasha.com

 +60 19-241 9296

Wednesday & Thursday: By appointment

Friday – Sunday: 12pm – 7pm

Closed on Monday & Tuesday

35A, Jalan Wan Kadir 2,

Taman Tun Dr Ismail,

60000 Kuala Lumpur, Malaysia



